

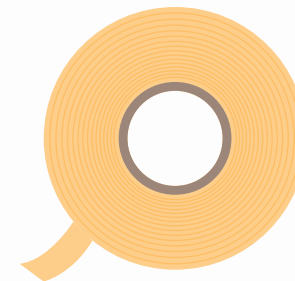
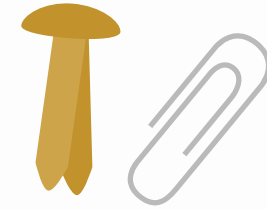
How to use the spinner:

To make a spinner that spins freely we suggest using a paper clip in conjunction with a brad / split pin.

1) Push the split pin through the centre of the spinner and fold back its 'leaves'. It is important that the split pin is not too tight to the paper (or the paper clip won't spin) - so bend the leaves back at the half way point of the split pin rather than at the top. It should protrude about 1cm from the spinner.

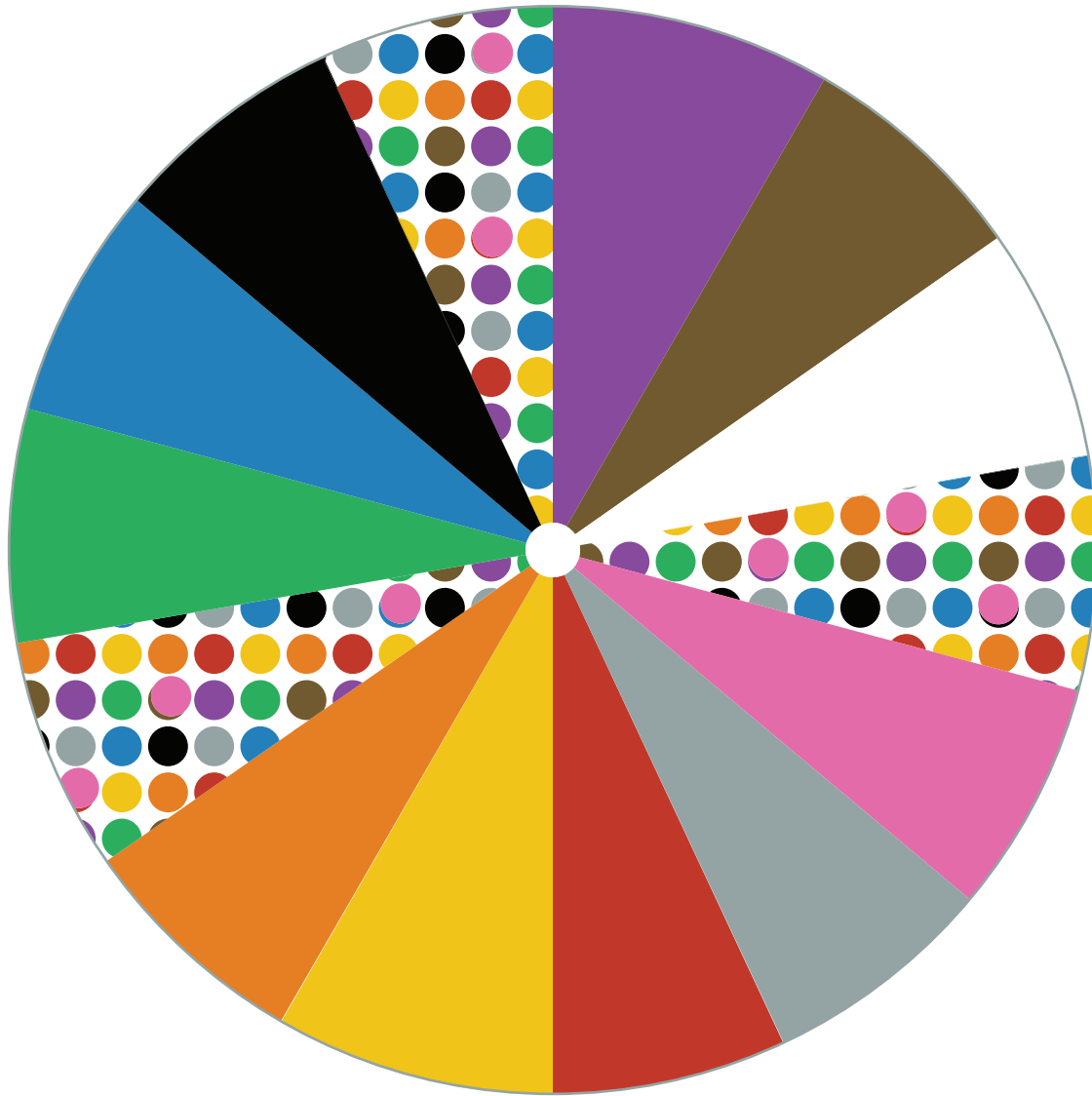
2) Secure the split pin by taping the leaves' to the back of the paper.

3) Push the paper clip over the split pin.



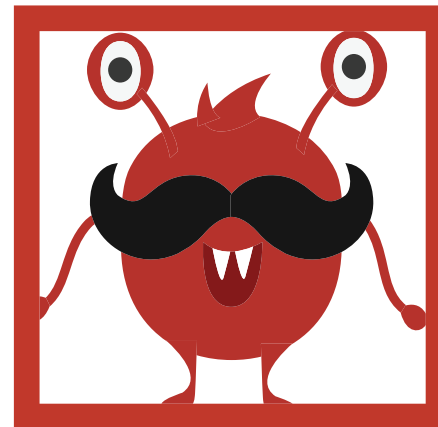
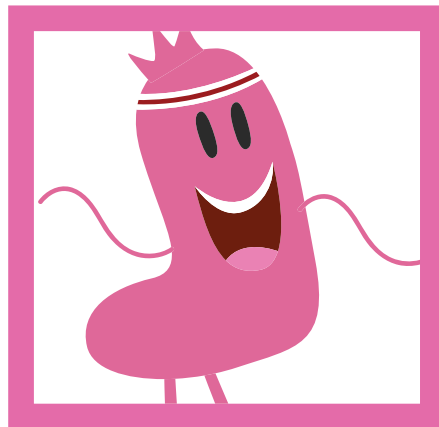
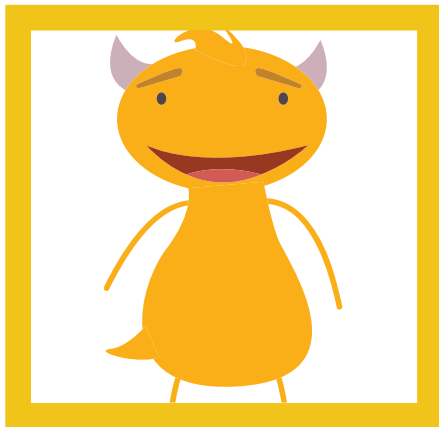
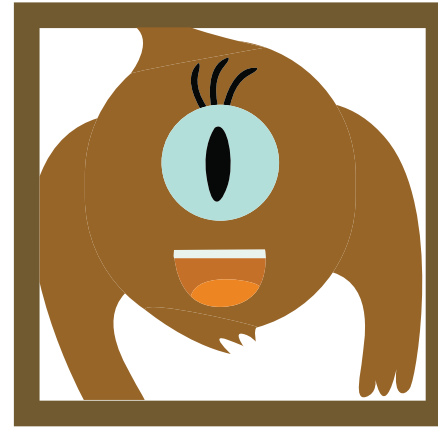
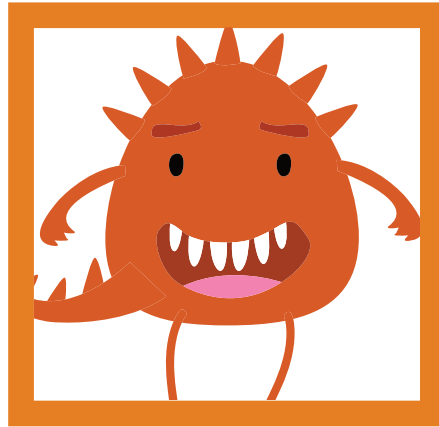
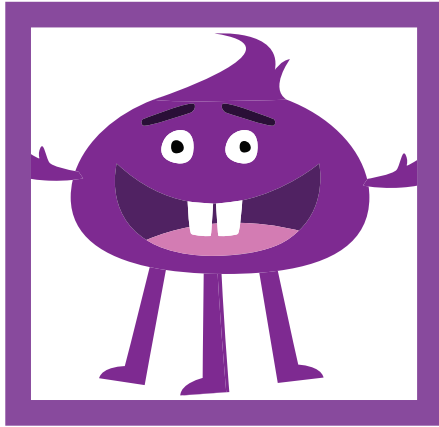
How to play the game:

Spin the spinner and collect a card that matches the colour the spinner stops on. If it stops on a multicoloured segment then you can choose any card. The winner is the player who collects all of the colours on their board.





Print several sheets and cut out the individual squares.





Print several sheets and cut out the individual squares.

